



A. Great Customer
Client ABC Co.
1500 Street One
Suite 400
Any City, State ZIP

Reference: Job Name: Sample Earthwork Analysis Project
SDS #: 15150014

Dear Client,

Thank you for the opportunity to be of service. The following estimate is provided in accordance with our Services Agreement. Please contact me at your earliest convenience if you should have any questions or concerns.

At your request we have provided a complete earthwork quantity takeoff and analysis. In addition, we have utilized the soil borings in the geotechnical report to generate subsurface strata layers and calculate the volumes of different types of earth and rock for an even more realistic estimate of the earthwork required on this project.

Please be aware that this is only a portion of the services available from SDS. We are capable of providing you with a complete, itemized sitework takeoff or cost estimate if necessary.

The following documents are attached:

- 1.) Earthwork Analysis Summary
- 2.) Site Cut/Fill Plans.

Thanks again for allowing us to assist in your estimating tasks.

Respectfully,

SITE DEVELOPMENT SERVICES, INC.

A blue ink signature of John R. Jordan, consisting of a large, stylized initial 'J' followed by a cursive name.

John R. Jordan
President

A blue ink signature of Ben Falcone, featuring a large, stylized initial 'B' followed by a cursive name.

Ben Falcone
Executive Vice President

SAMPLE JOB - COMMERCIAL
SDS No.: 0123456

TOPSOIL TO NON-STR'L FILL:

6" TOPSOIL STRIP IN DISTURBED AREAS	15,558 cy
LESS ESTIMATED NON-STR'L FILL ALLOWED	(40,939) cy
LESS TOPSOIL REQ'D FOR RESPREAD	(6,769) cy
SHORTAGE OF TOPSOIL/NON-STR'L MATERIAL	(32,150) cy

CUT TO STR'L FILL :

CUT IN CL+	47,940 cy
CUT IN ROCK (REFUSAL OR 50/5 BLOWS)	20,432 cy
ROCK SWELL ALLOWANCE (30%)	6,130 cy
TOTAL CUT MOVED	74,502 cy
LESS ESTIMATED STR'L FILL REQUIRED	(25,292) cy
EXCESS STR'L FILL MATERIAL	49,210 cy
BALANCE CHANGE PER 0.1'	3,578
RAISE/LOWER FOR BALANCE	1.4 vf

NET EXCESS	17,060 cy
BALANCE CHANGE PER 0.1'	3,578
RAISE/LOWER FOR BALANCE	0.5 vf

GRADING AREAS:

BUILDINGS	1.2 AC	53,140 sf
CONCRETE PAVEMENT	0.2 AC	10,589 sf
HEAVY DUTY PAVING	2.9 AC	125,038 sf
LIGHT DUTY PAVING	2.4 AC	103,104 sf
LANDSCAPE/GRASS AREAS	12.6 AC	548,273 sf
TOTAL DISTURBED AREA	19.3 AC	840,144 sf

TOPSOIL RESREADING:

4" TOPSOIL IN LANDSCAPE/GRASS AREAS	548,273 sf
VOLUME OF TOPSOIL REQUIRED	6,769 cy
TOPSOIL REQUIRED FOR RESPREAD	6,769 cy

Please see the "Estimating Notes" page for qualifications and assumptions.

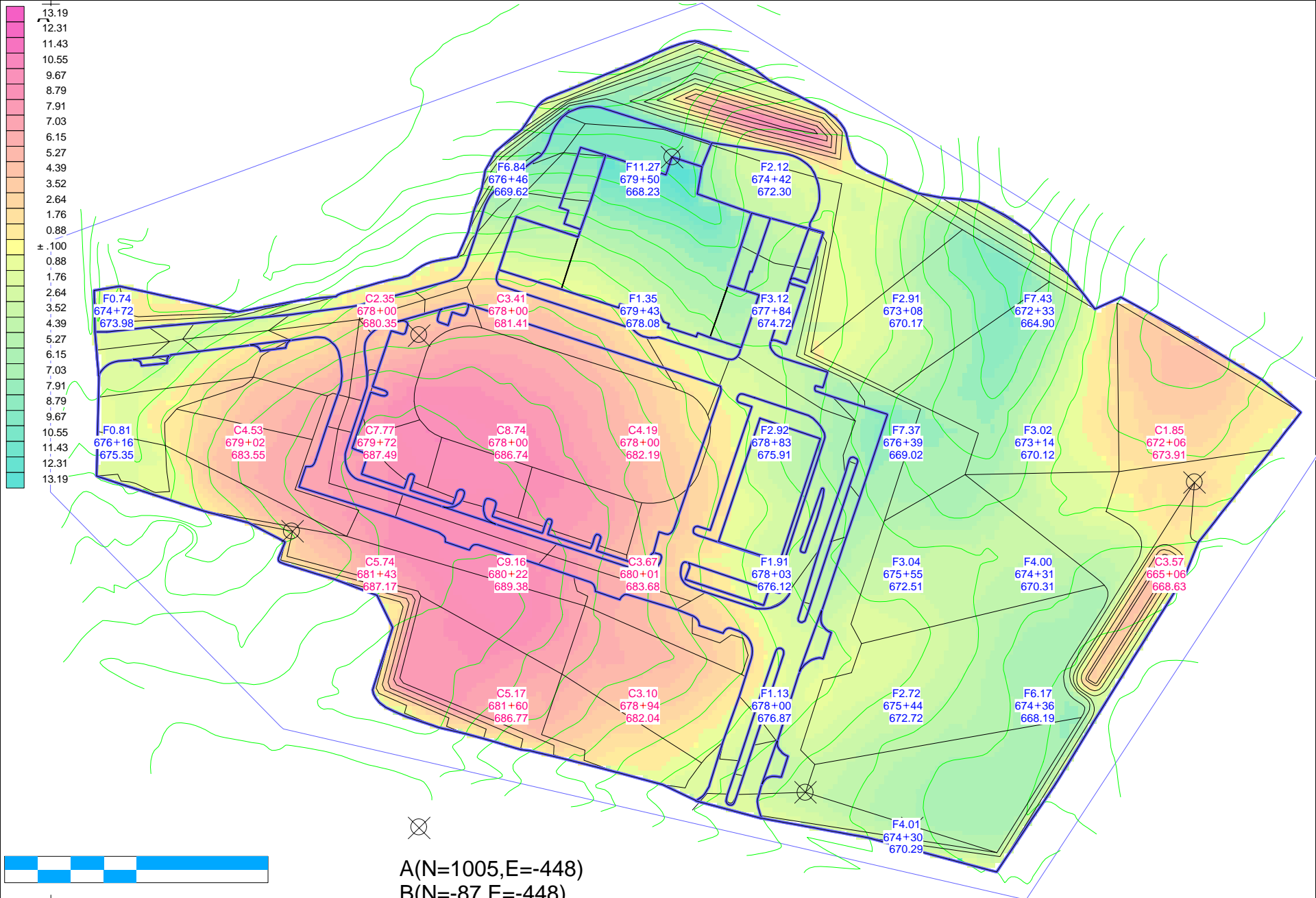
Sample Job - Commercial
5327.ESW
Units = Ft-CY
Feb 27,2007 16:11:38 Page 1

Volume CL+	Area			Volume		Comp Ratio		Volume		Export	Change
	Total	Cut	Fill	Cut	Fill	Cut	Fill	Cut	Fill	-Import	Per .1 FT
SITE	840,144	395,108	445,036	47,940	57,592	1.00	1.15	47,940	66,231	-18,291	
	REFUSAL	187,213		20,432		1.00		20,432		20,432	
		SITE	Total:	68,372	57,592			68,372	66,231	2,141	3,578

Regions Total	840,144	395,108	445,036	47,940	57,592			47,940	66,231	-18,291	
	REFUSAL	187,213		20,432				20,432		20,432	
		Regions	Total:	68,372	57,592			68,372	66,231	2,141	3,578

Strip Qtys	Depth	Length	Area	Volume
TOPSOIL	0.500	4,005	840,143	15,558

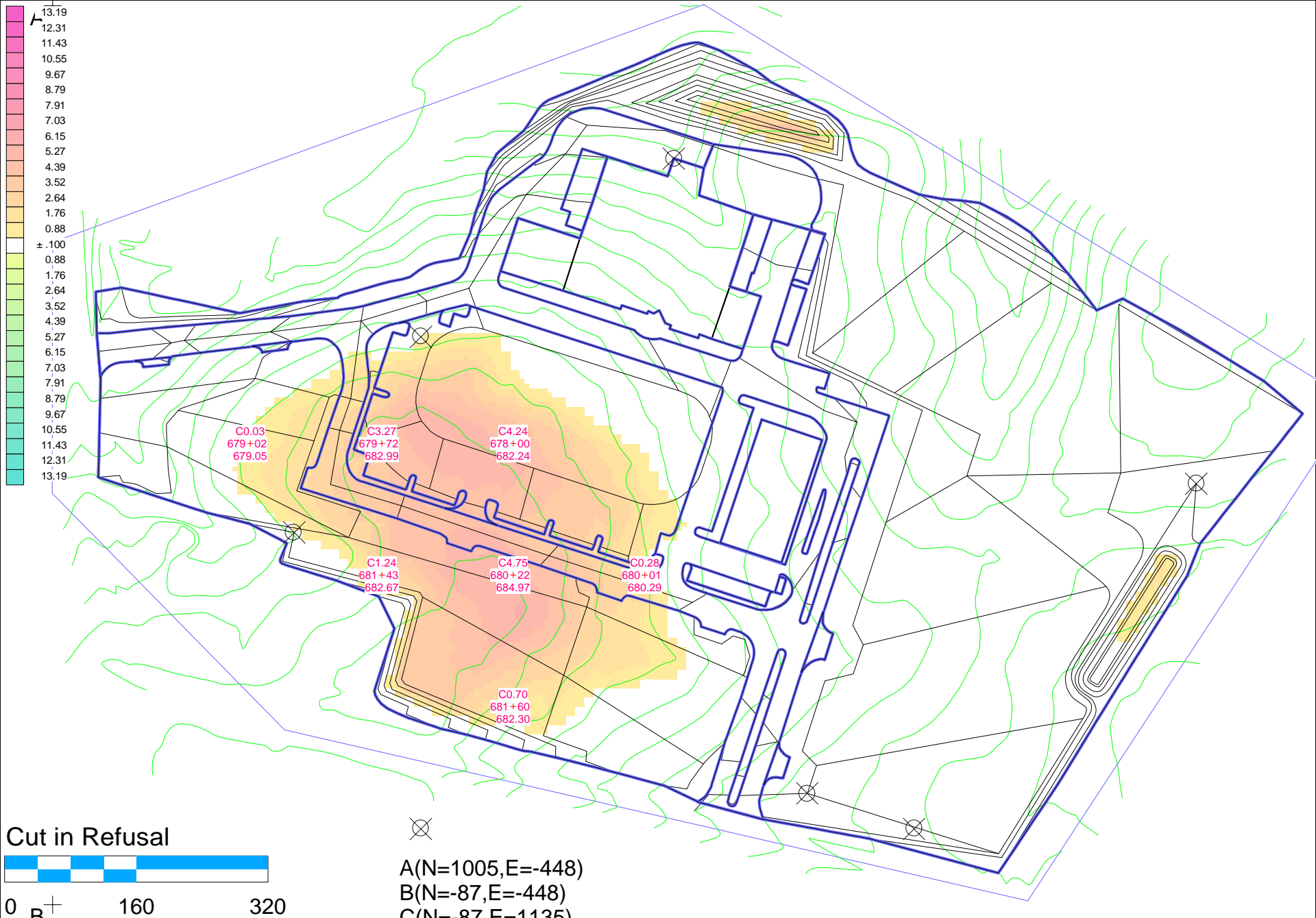
Sect Qtys	Depth	Length	Area	Volume
BUILDING	0.666	1,029	40,809	1,007
BUILDING	0.666	472	12,331	304
BUILDING	Sub:	1,501	53,140	1,311
CONCRETE PAVE	0.833	448	10,589	327
HEAVY PAVE	1.250	4,376	125,038	5,789
LIGHT PAVE	0.917	1,603	91,126	3,095
LIGHT PAVE	0.917	135	656	22
LIGHT PAVE	0.917	180	944	32
LIGHT PAVE	0.917	248	2,003	68
LIGHT PAVE	0.917	56	167	6
LIGHT PAVE	0.917	108	328	11
LIGHT PAVE	0.917	98	293	10
LIGHT PAVE	0.917	255	2,918	99
LIGHT PAVE	0.917	232	2,077	71
LIGHT PAVE	0.917	171	1,225	42
LIGHT PAVE	0.917	187	1,367	46
LIGHT	Sub:	3,273	103,104	3,502
RESPREAD	0.333	4,005	529,771	6,534
RESPREAD	0.333	390	1,471	18
RESPREAD	0.333	435	2,121	26
RESPREAD	0.333	170	493	6
RESPREAD	0.333	588	2,205	27
RESPREAD	0.333	825	4,108	51
RESPREAD	0.333	109	500	6
RESPREAD	0.333	614	5,440	67
RESPREAD	0.333	413	2,161	27
RESPREAD	Sub:	7,549	548,270	6,762
	Total	17,147	840,141	17,691

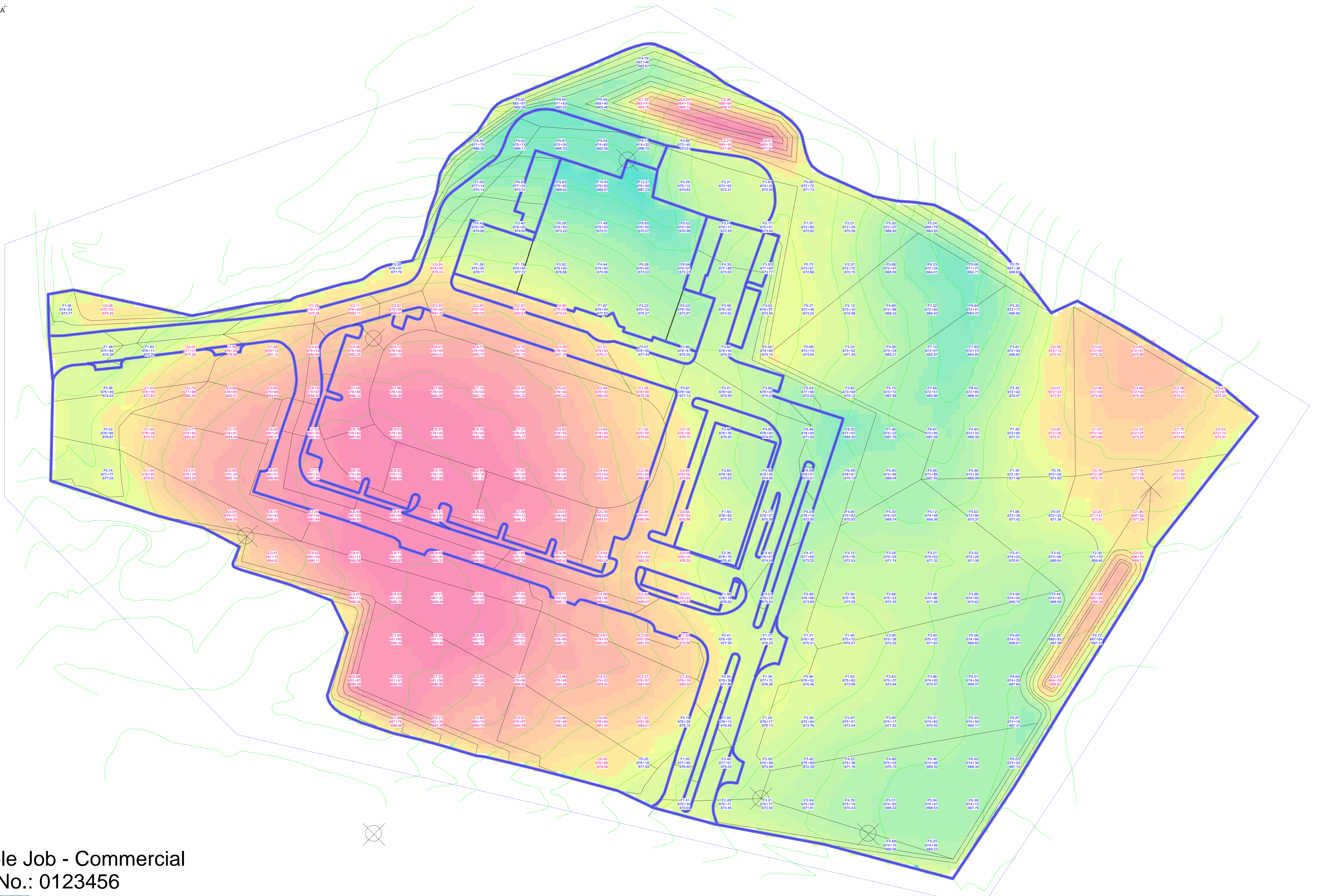
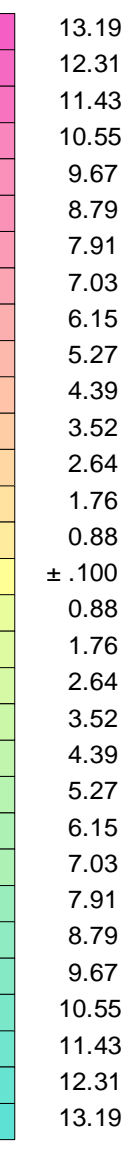


0 160 320
 Sample Job - Commercial
 SDS No.: 0123456

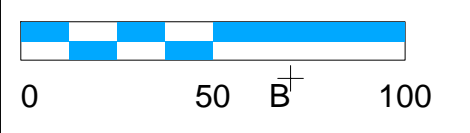
A(N=1005,E=-448)
 B(N=-87,E=-448)
 C(N=-87,E=1135)

Site Development Services, Inc.

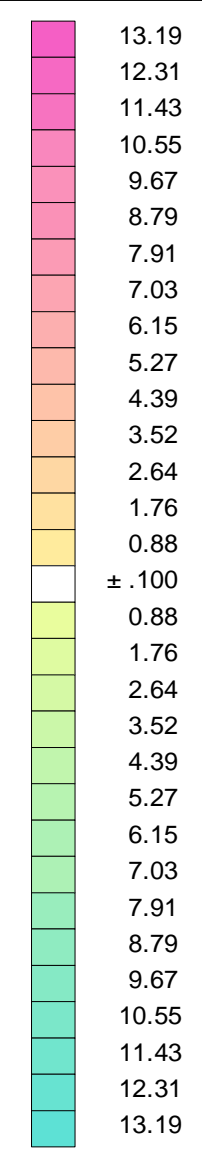
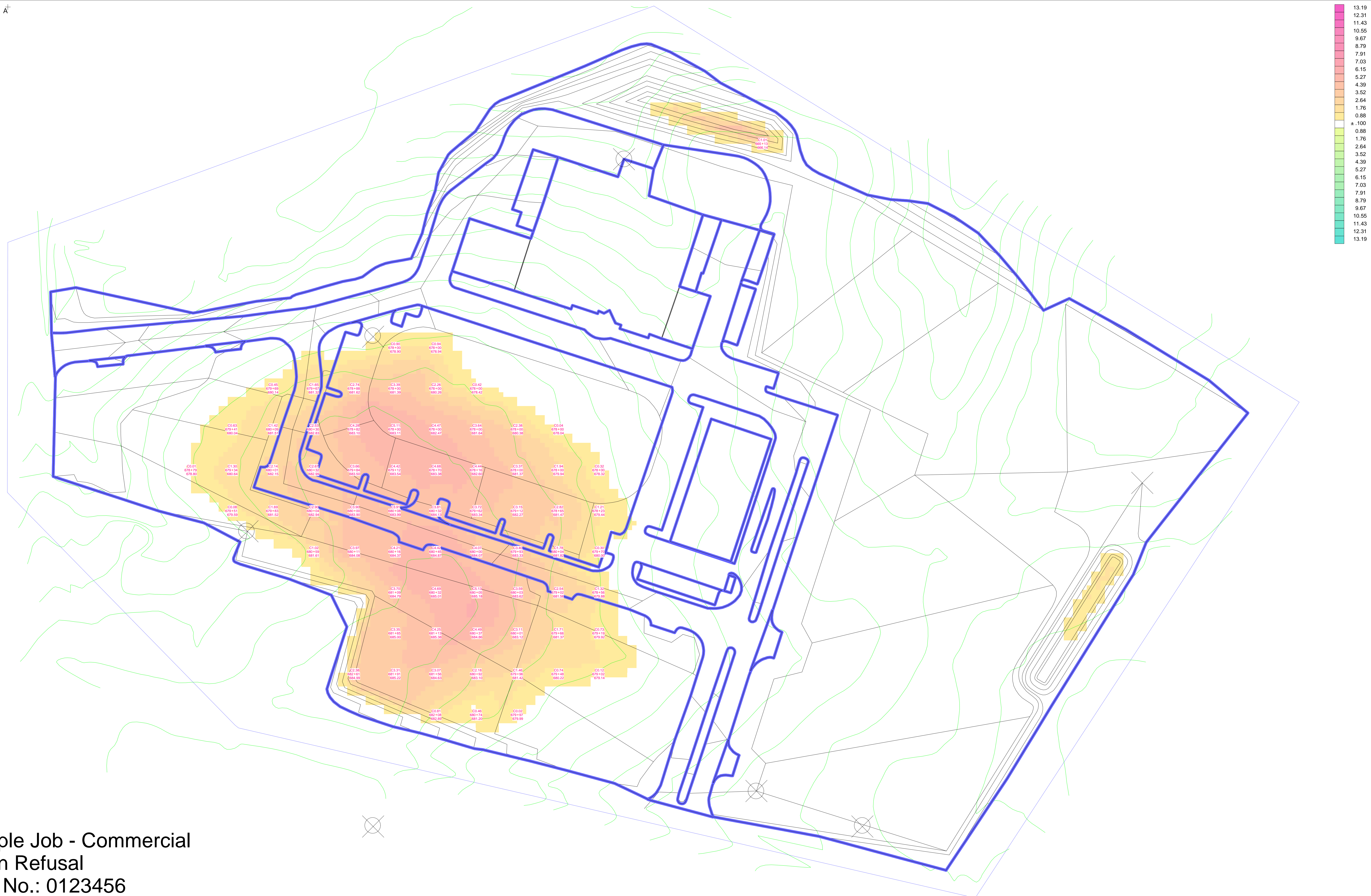




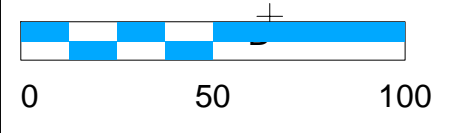
Sample Job - Commercial
 SDS No.: 0123456



A(N=1005,E=448)
 B(N=87,E=448)
 C(N=87,E=1135)



Sample Job - Commercial
Cut in Refusal
SDS No.: 0123456



A(N=1005,E=-448)
B(N=-87,E=-448)
C(N=-87,E=1135)