



A. Great Customer
Client ABC Co.
1500 Street One
Suite 400
Any City, State ZIP

Reference: Sample Commercial Project - Sitework Cost Estimate
SDS #: 1512311 COMMERCIAL

Dear Client,

Thank you for the opportunity to be of service. The following estimate is provided in accordance with our Services Agreement. Please contact me at your earliest convenience if you should have any questions or concerns.

At your request we have provided a complete, itemized sitework quantity takeoff and cost estimate. In addition, we have utilized the soil borings in the geotechnical report to generate subsurface strata layers and calculate the volumes of different types of earth and rock for an even more realistic estimate of the earthwork required on this project.

The following documents are attached:

- 1.) Land Development Budget Cost Estimate
- 2.) Earthwork Analysis Summary
- 3.) Site Cut/Fill Plans.

In an effort to minimize our environmental impact we have transmitted our report electronically and can overnight hard copies upon your request.

Thanks again for allowing us to assist in your estimating tasks.

Respectfully,

SITE DEVELOPMENT SERVICES, INC.

A blue ink signature of John R. Jordan, consisting of a large, stylized initial 'J' followed by a cursive name.

John R. Jordan
President

A blue ink signature of Ben Falcone, featuring a large, stylized initial 'B' followed by a cursive name.

Ben Falcone
Executive Vice President

SAMPLE JOB - COMMERCIAL
SDS No.: 0123456

NOTES:

- 1 Includes only hard costs.
- 2 Excludes permits and connection fees.
- 3 Excludes gas, electric and telephone utilities.
- 4 Includes permanent seeding of all green areas.
- 5 Includes blasting & rock excavation.
- 6 Excludes undercutting and unsuitable soil manipulation.
- 7 Excludes engineering, stakeout and soils testing.
- 8 15% has been added to the bank fill volumes to allow for compaction.
- 9 Cut and fill quantities have been calculated after topsoil stripping, if any, to subgrade elevations.
- 10 Subgrade elevations were calculated using the following sectional thicknesses:

Concrete Pavement:	10"
Light Pavement:	11"
Heavy Pavement:	15"
Frontage Improvement Pavement:	15"
Buildings:	8"
- 11 Non structural fill is calculated as fill 10' beyond building footprints and streets.
- 12 Sanitary, storm and watermain pipe prices include pipe testing and stone bedding where required.
- 13 Excludes monument sign with Store Name Panel.
- 14 Excludes brick and wood dumpster enclosures.
- 15 Excludes wetland mitigation.
- 16 Excludes construction road stabilization, temp. outlet retrofittings and surface roughening in erosion controls.
- 17 Excludes concrete pad for swithgear and future generator.
- 18 All demolition prices are allowances and should be verified with a demolition contractor.
- 19 Unit prices have been provided for budgetary purposes and may or may not reflect actual bid prices.
- 20 Excludes removal of the debris pile.

SAMPLE JOB - COMMERCIAL**SDS No.: 0123456****DOCUMENT/FILE(S) USED IN ESTIMATING:**

1 Set of site plans prepared by (ENGINEER/ARCHITECTS NAME), specifically(from tif files)

Sheet	Plan	Scale	Seal Date
C-1	Demolition Plan	1"=60'	6/2/2006
C-2	Overall Site Plan	1"=60'	6/2/2006
C-3	Blow-up Site Plan	1"=50'	6/2/2006
C-3	Blow-up Site Plan(revision)	1"=50'	6/16/2006
C-4	Erosion & Sediment Control Plan	1"=50'	6/2/2006
C-4	Erosion & Sediment Control Plan(revised)	1"=50'	6/16/2006
C-5	Grading & Drainage Plan	1"=50'	6/2/2006
C-5	Grading & Drainage Plan(revision)	1"=50'	6/16/2006
C-6	Utility Plan	1"=50'	6/2/2006
C-6	Utility Plan(revision)	1"=50'	6/16/2006
C-7,C-8	Sanitary Sewer Plan & Profile of Line A	H=50',V=5'	6/2/2006
C-7,C-8	Sanitary Sewer Plan & Profile of Line A(revision)	H=50',V=5'	6/16/2006
C-10	General Notes	N/A	6/2/2006
C-10	General Notes(revision)	N/A	6/16/2006
C-11	Parking & Paving Details & Notes	N/A	6/2/2006
C-11	Parking & Paving Details & Notes(revision)	N/A	6/16/2006
L-1	Landscape Plan	1"=50'	6/19/2006
ES-1,ES-1A	Site Plan	1"=30'	6/16/2006

2 The following TIF files e-mailed from (ENGINEER/ARCHITECT/CLIENT) on 07/11/2006

Name	Size
359386_0001C-3 - ADDENDA #1.tif	783 KB
359387_0002C-4 - ADDENDA #1.tif	921 KB
359388_0003C-5 - ADDENDA #1.tif	927 KB
359389_0004C-6 - ADDENDA #1.tif	815 KB
359390_0005C-7 - ADDENDA #1.tif	511 KB
359391_0006C-8 - ADDENDA #1.tif	409 KB
359392_0007C-10 - ADDENDA #1.tif	632 KB
359393_0008C-11 - ADDENDA #1.tif	670 KB
359394_0009C-13 - ADDENDA #1.tif	429 KB

3 The following TIF files e-mailed from (ENGINEER/ARCHITECT/CLIENT) on 07/11/2006

Name	Size
348063_0001_COVER.tif	404 KB
348064_0002_C-1.tif	782 KB
348065_0003_C-2.tif	1,094 KB
348066_0004_C-3.tif	1,237 KB
348067_0005_C-4.tif	1,320 KB
348068_0006_C-5.tif	1,297 KB
348069_0007_C-6.tif	1,266 KB
348070_0008_C-7.tif	765 KB
348071_0009_C-8.tif	432 KB
348072_0010_C-9.tif	1,065 KB
348073_0011_C-10.tif	915 KB
348074_0012_C-11.tif	801 KB
348075_0013_C-12.tif	836 KB
348076_0014_C-13.tif	574 KB
348077_0015_C-14.tif	1,068 KB
348078_0016_L-1.tif	804 KB
348079_0017_ES-1.tif	959 KB

4 The following PDF files e-mailed from (ENGINEER/ARCHITECT/CLIENT) on 07/11/2006

Name	Size
Geotechnical Report.pdf	2,581 KB
359278_Addendum 1.pdf	199 KB

5 Fax of Addendum No. 1, three pages, dated 06/19/2006.

6 Report of Subsurface Exploration and Geotechnical Engineering Analyses dated 01/05/2006 prepared by (GEOTECHNICAL CONSULTANT).

Site Development Services, Inc.

0123456.SAMPLE JOB - COMMERCIAL.xls Printed 3/23/2007

SAMPLE JOB - COMMERCIAL
SDS No.: 0123456
LAND DEVELOPMENT BUDGET COST ESTIMATE
SUMMARY:

DESCRIPTION	TOTAL COST	NOTES
CLEARING & DEMOLITION	\$ 85,947	
EARTHWORK AND GRADING	693,959	
SEDIMENT CONTROL	49,134	
SILT CONTROL MAINT & REMOVAL	12,284	
SANITARY SEWER	125,692	
WATER SYSTEM	136,724	
STORM SEWER	330,464	
CURB & GUTTER	171,212	
SIDEWALKS & CONCRETE PAVEMENT	67,347	
TRAILS	43,468	
PAVING/STONE BASE	398,555	
PAVING/ASPHALT BASE/PRIME	210,037	
FINAL PAVING	231,895	
PARKING LOT STRIPING	2,498	
STREET LIGHTS	115,829	
SIGNS	4,540	
LANDSCAPING	904,399	
BLASTING/ROCK ALLOWANCE	383,444	
SUBTOTAL	\$ 3,967,427	
	10% CONTINGENCY	396,743
GRAND TOTAL	\$ 4,364,170	

Please see attached "Notes" page for qualifications and assumptions.

SAMPLE JOB - COMMERCIAL DESCRIPTION	TAKEOFF QUANTITY	UNIT TYPE	UNIT PRICE	EXTENSION PRICE	TOTAL COST	NOTES
CLEARING & DEMOLITION					85,947.14	
CLEARING	1.17	AC	8,402.24	9,830.62		
DEMO EX ASPHALT D/W	149	SY	3.25	484.25		
DEMO EX BUILDINGS	3937	SF	4.39	17,283.43		Allowance
SAW CUT EX ASPHALT	2655	LF	6.16	16,354.80		
DEMO EX C&G	420	LF	13.42	5,634.92		
DEMO FIRE HYDRANT	1	EA	1,016.40	1,016.40		
DEMO EX STORM STRS	2	EA	745.36	1,490.72		
RELOCATE EX UTILITY POLE	1	EA	33,600.00	33,600.00		
DEMO EX FENCE	150	LF	1.68	252.00		
EARTHWORK AND GRADING					693,959.26	
STRIP TOPSOIL TO STOCK FOR RESP	6,769	CY	3.50	23,691.50		
STRIP TOPSOIL TO NON-STR'L FILL	8,789	CY	3.50	30,761.50		
CUT TO STR'L FILL	25,292	CY	3.50	88,522.00		
CUT TO NON-STR'L FILL	32,150	CY	3.50	112,525.00		
CUT TO EXPORT SUITABLE FILL	17,060	CY	20.16	343,929.60		

SAMPLE JOB - COMMERCIAL	TAKEOFF	UNIT	EXTENSION	TOTAL	NOTES
DESCRIPTION	QUANTITY	TYPE	PRICE	PRICE	COST
ROUGH GRADE STREETS	26,526	SY	0.86	22,875.73	
ROUGH GRADE GREEN AREAS	60,919	SY	0.62	37,526.24	
ROUGH GRADE BUILDING PADS	5,904	SY	0.62	3,637.14	
ROUGH GRADE MEDIANS	476	SY	3.70	1,758.06	
FINE GRADE R/W	1,460	SY	1.23	1,798.72	
FRONTAGE IMPROVEMENT ALLOWAN	1,336	CY	20.16	26,933.76	
SEDIMENT CONTROL				49,134.41	
SURGE STONE CONSTRUCTION ENTR	1	EA	2,236.08	2,236.08	
WASH RACK	1	EA	1,788.86	1,788.86	
DIVERSION DIKE	387	LF	2.53	980.74	
STRAW BALE BARRIER	197	LF	4.84	954.43	
TEMP DIVERSION SWALE	866	LF	2.53	2,194.64	
SAFETY FENCE	574	LF	2.83	1,625.78	
SILT FENCE	4,337	LF	2.83	12,283.98	
STRUCTURE PROTECTION	21	EA	203.28	4,268.88	
TEMP. SEED & MULCH	67,299	SY	0.34	22,801.01	All disturbed areas except pavement.
SILT CONTROL MAINT & REMOVAL				12,283.60	
ALLOWANCE	25%	LS	49,134	12,283.60	
SANITARY SEWER				125,691.62	
PVC:					
8" PVC SANITARY MAIN 0-6'	280	LF	30.25	8,471.17	
8" PVC SANITARY MAIN 6-8'	946	LF	31.45	29,747.91	
8" PVC SANITARY MAIN 8-10'	519	LF	33.50	17,388.26	
MANHOLES:					
48" MANHOLE BASES/CASTING	7	EA	1,324.40	9,270.80	
48" MANHOLE RISERS	45.69	VF	308.00	14,072.52	
CORE EX MH & CONNECT	1	EA	3,726.80	3,726.80	
OIL/GRIT SEPERATOR	1	EA	6,776.00	6,776.00	Allowance
SANITARY STUB	2	EA	560.00	1,120.00	
LATERALS:					
4" PVC SANITARY LATERALS	567	LF	34.87	19,768.80	
4" LATERAL CONNECTIONS	9	EA	271.04	2,439.36	
4" LATERAL PLUG & MARKER	9	EA	41.74	375.66	
4" CLEANOUTS	11	EA	260.88	2,869.64	
4" PVC BEND	8	EA	27.10	216.83	
8"X4" PVC WYE	1	EA	40.66	40.66	
8"X4" PVC CROSS	1	EA	150.00	150.00	
MISCELLANEOUS:					
TEST PIT	1	EA	670.82	670.82	
UTILITY CROSSING	1	EA	5,600.00	5,600.00	
OPEN CUT AND PATCH PAVEMENT	11	SY	88.09	968.97	
STONE BACKFILL IN PAVED AREAS	14	CY	36.96	517.44	
TRAFFIC CONTROL ALLOWANCE	1	AL	1,500.00	1,500.00	
WATER SYSTEM				136,724.32	
DIP:					

SAMPLE JOB - COMMERCIAL	TAKEOFF	UNIT	EXTENSION	TOTAL		
DESCRIPTION	QUANTITY	TYPE	PRICE	PRICE	COST	NOTES
6" DIP	119	LF	36.96	4,398.24		
8" DIP	1,490	LF	38.19	56,906.08		
WATER LINE TESTING	1,609	LF	1.68	2,698.06		
CORROSION PROTECTION	1,609	LF	15.31	24,639.84		
STONE BACKFILL IN PAVED AREAS	7	CY	36.96	258.72		
FITTINGS & VALVES:						
6" GATE VALVE	4	EA	989.35	3,957.38		
8" GATE VALVE	2	EA	1,343.16	2,686.32		
8X6 TEE	4	EA	444.37	1,777.50		
8" BEND	4	EA	551.89	2,207.55		
8X8 WET TAP	1	EA	4,999.45	4,999.45		
12X8 WET TAP	1	EA	7,612.80	7,612.80		
FIRE HYDRANT	3	EA	2,986.18	8,958.55		
DOMESTIC SERVICES	12	EA	972.58	11,670.92		
MISCELLANEOUS:						
TEST PIT	3	EA	670.82	2,012.47		
OPEN CUT AND PATCH PAVEMENT	5	SY	88.09	440.44		
TRAFFIC CONTROL ALLOWANCE	1	AL	1,500.00	1,500.00		
STORM SEWER					330,463.52	
PVC:						
10" PVC	62	LF	22.36	1,386.37		Roof drains
RCP CLASSES II & III:						
10" RCP CL II & III	228	LF	26.87	6,126.36		
12" RCP CL II & III	200	LF	32.24	6,448.85		Driveway culvert
12" RCP CL II & III	108	LF	32.24	3,482.38		
15" RCP CL II & III	1,001	LF	34.38	34,418.38		
18" RCP CL II & III	909	LF	39.60	35,992.73		
24" RCP CL II & III	717	LF	50.40	36,136.80		
30" RCP CL III	393	LF	67.87	26,674.56		
36" RCP CL III	27	LF	82.29	2,221.73		
42" RCP CL III	63	LF	98.35	6,195.74		
PVC CLEANOUTS:						
10" CLEANOUTS	1	EA	376.07	376.07		
STRUCTURES:						
2, CURB INLET	7.35	VF		4,381.84		
4, DROP INLET	7.53	VF		4,093.86		
5, CURB INLET	3.35	VF		3,662.63		
6, DROP INLET	3.12	VF		3,594.89		
7, CURB INLET	2.57	VF		3,432.88		
8, DROP INLET	3.00	VF		3,559.54		
9, DROP INLET	4.50	VF		3,201.37		
10, DROP INLET	3.57	VF		3,727.44		
11, DROP INLET	3.00	VF		3,559.54		
13, CURB INLET	7.90	VF		6,321.85		
14, DROP INLET	11.00	VF		5,456.96		
15, DROP INLET	4.60	VF		3,230.82		
16, CURB INLET	3.50	VF		3,706.82		
17, DROP INLET	3.00	VF		3,559.54		

SAMPLE JOB - COMMERCIAL	TAKEOFF	UNIT	EXTENSION	TOTAL		
DESCRIPTION	QUANTITY	TYPE	PRICE	PRICE	COST	NOTES
18, CURB INLET	8.42	VF		4,356.02		
19, CURB INLET	7.88	VF		4,196.96		
20, CURB INLET	5.89	VF		3,610.80		
21, CURB INLET	2.42	VF		3,388.70		
22, CURB INLET	3.00	VF		3,559.54		
24, CURB INLET	4.00	VF		3,054.09		
27, CURB INLET	7.09	VF		3,559.54		
29, CURB INLET	3.50	VF		3,447.61		
25A, DI-3B L=8'	3.00	VF		4,591.26		
26A, DI-3B L=8'	3.00	VF		4,333.82		
28, DI-3B L=4'	2.62	VF		4,186.54		
3, MH	10.15	VF		3,867.59		
25, RISER-42"	9.05	VF		9,111.05		
35, RISER	2.25	VF		5,628.65		
37, JUNCTION BOX	5.00	VF		4,339.40		
34, JUNCTION BOX	4.50	VF		4,219.90		
END SECTIONS:						
33, ES-1 30"	1	EA	980.23	980.23		
END WALLS:						
23, HW-18"	1	EA	769.06	769.06		
1, HW-30"	1	EA	1,393.82	1,393.82		
36, HW-30"	1	EA	1,393.82	1,393.82		
12, HW-36"	1	EA	1,607.00	1,607.00		
26, HW-42"	1	EA	2,459.69	2,459.69		
DITCHES:						
6' ROADSIDE DITCH - SEEDED	920	LF	7.45	6,857.31		Relocated ditch along Rte 657
REINFORCEMENT MAT	444	SY	4.47	1,985.64		
CLI DRY RIP RAP	30	SY	68.99	2,069.76		
MISCELLANEOUS:						
FIELD CONNECTION	1	EA	1,355.20	1,355.20		Curb inlet on existing pipe
OPEN CUT AND PATCH PAVEMENT	9	SY	88.09	792.79		
STONE BACKFILL IN PAVED AREAS	12	CY	36.96	443.52		
TRAFFIC CONTROL ALLOWANCE	1	AL	2,000.00	2,000.00		
SWM PONDS:						
4' CHAIN LINK FENCE	1,200	LF	14.91	17,888.64		Allowance per detail 16/C11
STANDARD ACCESS ROAD GATE	2	EA	2,032.80	4,065.60		Allowance per detail 16/C11
CURB & GUTTER				171,212.03		
CURB & GUTTER	219	LF	19.10	4,182.02		Concrete
CURB & GUTTER	2,726	LF	19.10	52,055.70		Light
CURB & GUTTER	4,637	LF	19.10	88,548.15		Heavy
CURB & GUTTER	1,362	LF	19.10	26,008.75		Frontage Improvements
WHEEL STOPS	8	EA	52.18	417.40		
SIDEWALKS & CONCRETE PAVEMENT				67,347.06		
HANDICAP RAMPS	13	EA	745.36	9,689.68		
4" CONC. SIDEWALK	427	SY	37.27	15,913.44		
6" 21-A BASE	1,064	SY	8.78	9,345.14	\$25.46 ton	Concrete pavement
4" REINFORCED CONC. PAVING	1064	SY	30.45	32,398.80		Concrete pavement

SAMPLE JOB - COMMERCIAL	TAKEOFF	UNIT	EXTENSION	TOTAL		
DESCRIPTION	QUANTITY	TYPE	PRICE	PRICE	COST	NOTES
TRAILS					43,468.20	
10' ASPHALT TRAIL	1,178	SY	36.90	43,468.20		
PAVING/STONE BASE					398,554.63	
FINE GRADE	27,255	SY	0.75	20,314.79		
4" STONE UNDER CURB	219	LF	2.98	652.94		Concrete
4" STONE UNDER CURB	2,726	LF	2.98	8,127.41		Light
8" STONE UNDER CURB	4,637	LF	4.49	20,820.13		Heavy
11" STONE UNDER CURB	1,362	LF	6.09	8,294.58		Frontage Improvements
8" 21-A BASE	11,172	SY	11.43	127,640.94	\$24.84 ton	Light
10" 21-B BASE	2,672	SY	14.16	37,841.53	\$24.63 ton	Frontage Improvements
10" 21-B BASE	12,347	SY	14.16	174,862.32	\$24.63 ton	Heavy
PAVING/ASPHALT BASE/PRIME					210,036.74	
1.5" ASPHALT BASE (115#)	11,172	SY	5.13	57,338.70	\$59.51 ton	Light
3" ASPHALT BASE (115#)	12,347	SY	10.17	125,531.42	\$58.94 ton	Heavy
3" ASPHALT BASE (115#)	2,672	SY	10.17	27,166.62	\$58.94 ton	Frontage Improvements
FINAL PAVING					231,895.02	
1.5" FINAL ASPHALT PAVING	11,172	SY	5.33	59,523.04	\$61.77 ton	Light
2" FINAL ASPHALT PAVING	12,347	SY	6.84	84,492.30	\$59.51 ton	Heavy
2" FINAL ASPHALT PAVING	2,672	SY	6.84	18,284.88	\$59.51 ton	Frontage Improvements
2" FINAL OVERLAY	3,680	SY	6.84	25,182.77	\$59.51 ton	Frontage Improvements
MILL EXISTING PAVING	3,680	SY	6.63	24,412.03		Frontage Improvements
TRAFFIC CONTROL ALLOWANCE	1	AL	20,000.00	20,000.00		
PARKING LOT STRIPING					2,498.15	
PARKING LOT STRIPING	11,172	SY	0.22	2,498.15		
STREET LIGHTS					115,828.94	
LP-1 ALLOWANCE	30	EA	1,937.94	58,138.08		
LP-2 ALLOWANCE	16	EA	2,012.47	32,199.55		
LP-3 ALLOWANCE	1	EA	3,130.51	3,130.51		
LP-4 ALLOWANCE	6	EA	3,726.80	22,360.80		
SIGNS					4,539.92	
HANDICAP SIGNS	8	EA	338.80	2,710.40		
STREET	3	EA	338.80	1,016.40		
STOP	3	EA	271.04	813.12		
LANDSCAPING					904,399.07	
RESPREAD TOPSOIL	6,769	CY	6.10	41,280.07		
FINE GRADE/SEED/MULCH/FERTILIZE	59,467	SY	1.12	66,486.36		All green areas.
FINE GRADE AND SOD	1,928	SY	4.74	9,144.89		
SHRUBS	93	EA	96.90	9,011.40		
EVERGREEN TREES	48	EA	260.88	12,522.05		
DECIDIOUS TREES	31	EA	298.14	9,242.46		
ORNAMENTAL TREES	110	EA	372.68	40,994.80		

SAMPLE JOB - COMMERCIAL	TAKEOFF	UNIT	EXTENSION	TOTAL	NOTES
DESCRIPTION	QUANTITY	TYPE	PRICE	PRICE	COST
BLASTING/ROCK ALLOWANCE				383,443.68	
MASS ROCK BLAST	20,432	CY	13.55	276,894.46	
BLAST SANITARY MAIN 4' W TRENCH	1,021	CY	37.27	38,050.63	
BLAST SANITARY LATERALS	283	CY	37.27	10,546.84	
BLAST WATERMAIN 4' W TRENCH	122	CY	37.27	4,546.70	
BLAST DOMESTIC SERVICES	21	CY	37.27	782.63	
BLAST STORM SEWER TRENCH	1,412	CY	37.27	52,622.42	
CRUSH ROCK ONSITE	20,432	CY	16.26	332,273.36	
END OF ESTIMATE					

SAMPLE JOB - COMMERCIAL
SDS No.: 0123456

TOPSOIL TO NON-STR'L FILL:

6" TOPSOIL STRIP IN DISTURBED AREAS	15,558 cy
LESS ESTIMATED NON-STR'L FILL ALLOWED	(40,939) cy
LESS TOPSOIL REQ'D FOR RESPREAD	(6,769) cy
SHORTAGE OF TOPSOIL/NON-STR'L MATERIAL	(32,150) cy

CUT TO STR'L FILL :

CUT IN CL+	47,940 cy
CUT IN ROCK (REFUSAL OR 50/5 BLOWS)	20,432 cy
ROCK SWELL ALLOWANCE (30%)	6,130 cy
TOTAL CUT MOVED	74,502 cy
LESS ESTIMATED STR'L FILL REQUIRED	(25,292) cy
EXCESS STR'L FILL MATERIAL	49,210 cy
BALANCE CHANGE PER 0.1'	3,578
RAISE/LOWER FOR BALANCE	1.4 vf

NET EXCESS	17,060 cy
BALANCE CHANGE PER 0.1'	3,578
RAISE/LOWER FOR BALANCE	0.5 vf

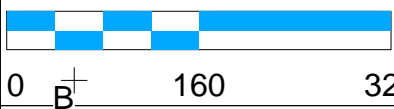
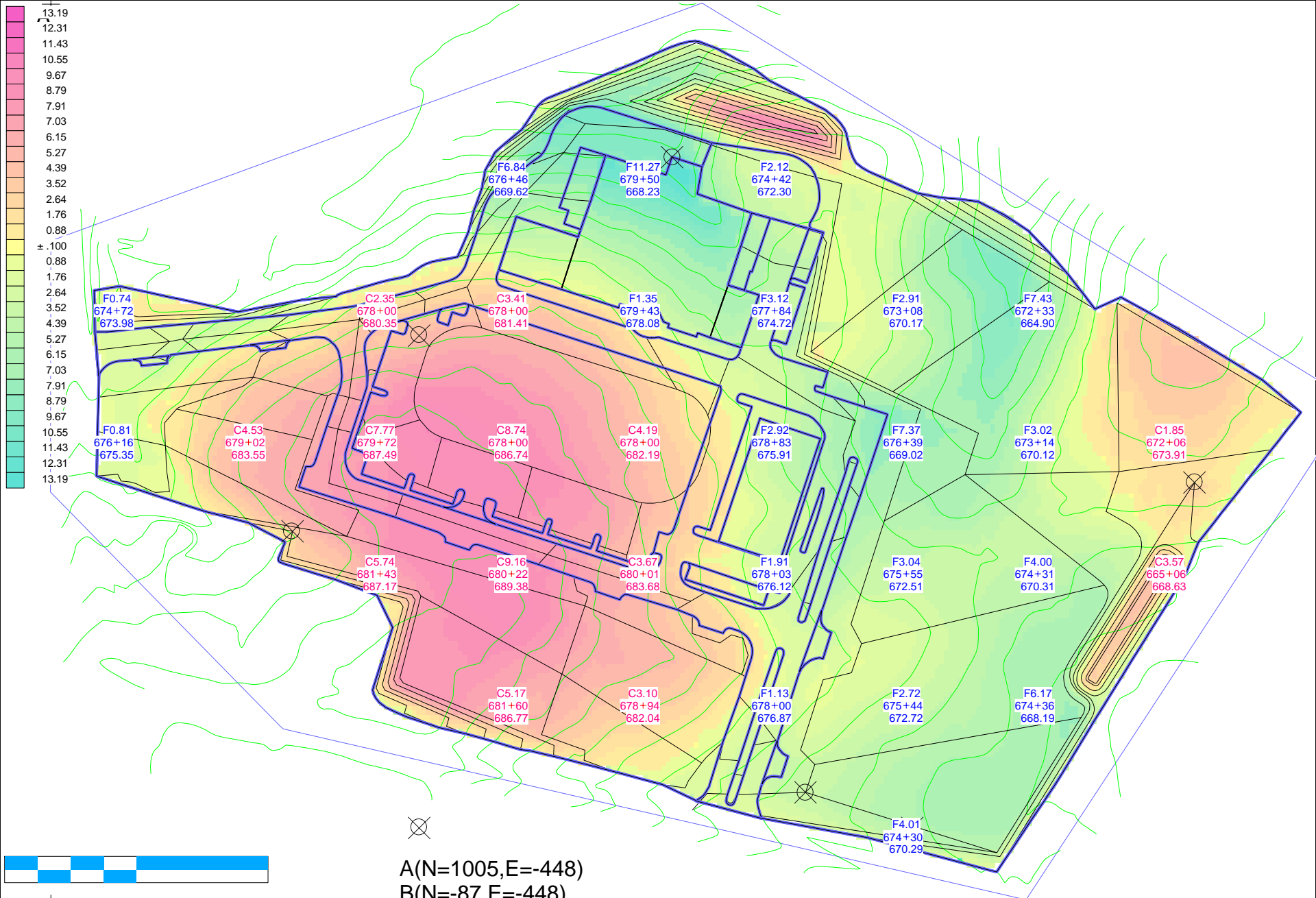
GRADING AREAS:

BUILDINGS	1.2 AC	53,140 sf
CONCRETE PAVEMENT	0.2 AC	10,589 sf
HEAVY DUTY PAVING	2.9 AC	125,038 sf
LIGHT DUTY PAVING	2.4 AC	103,104 sf
LANDSCAPE/GRASS AREAS	12.6 AC	548,273 sf
TOTAL DISTURBED AREA	19.3 AC	840,144 sf

TOPSOIL RESREADING:

4" TOPSOIL IN LANDSCAPE/GRASS AREAS	548,273 sf
VOLUME OF TOPSOIL REQUIRED	6,769 cy
TOPSOIL REQUIRED FOR RESPREAD	6,769 cy

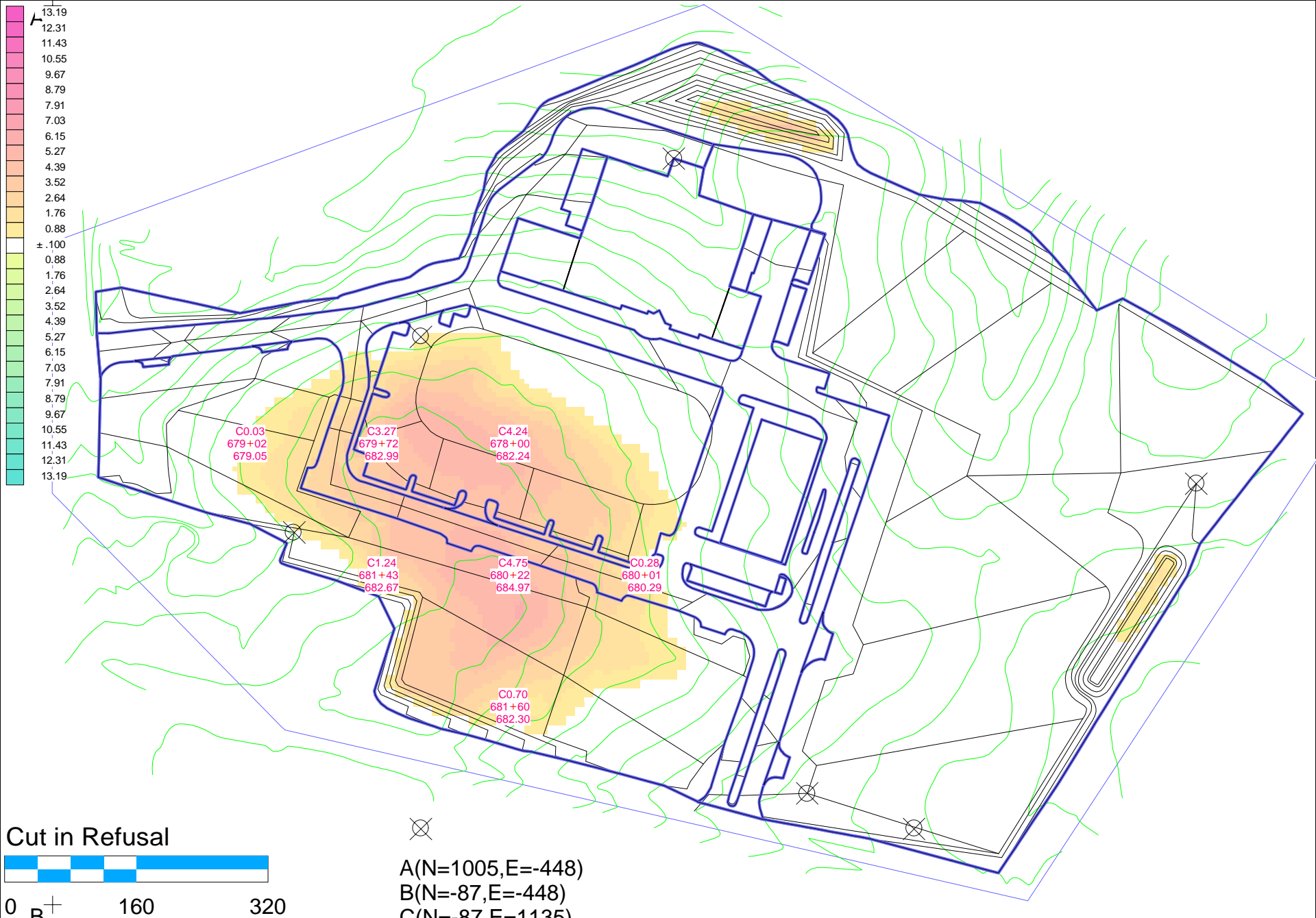
Please see the "Estimating Notes" page for qualifications and assumptions.



A(N=1005,E=-448)
 B(N=-87,E=-448)
 C(N=-87,E=1135)

Sample Job - Commercial
 SDS No.: 0123456

Site Development Services, Inc.



Cut in Refusal



0 B+ 160 320

Sample Job - Commercial
SDS No.: 0123456



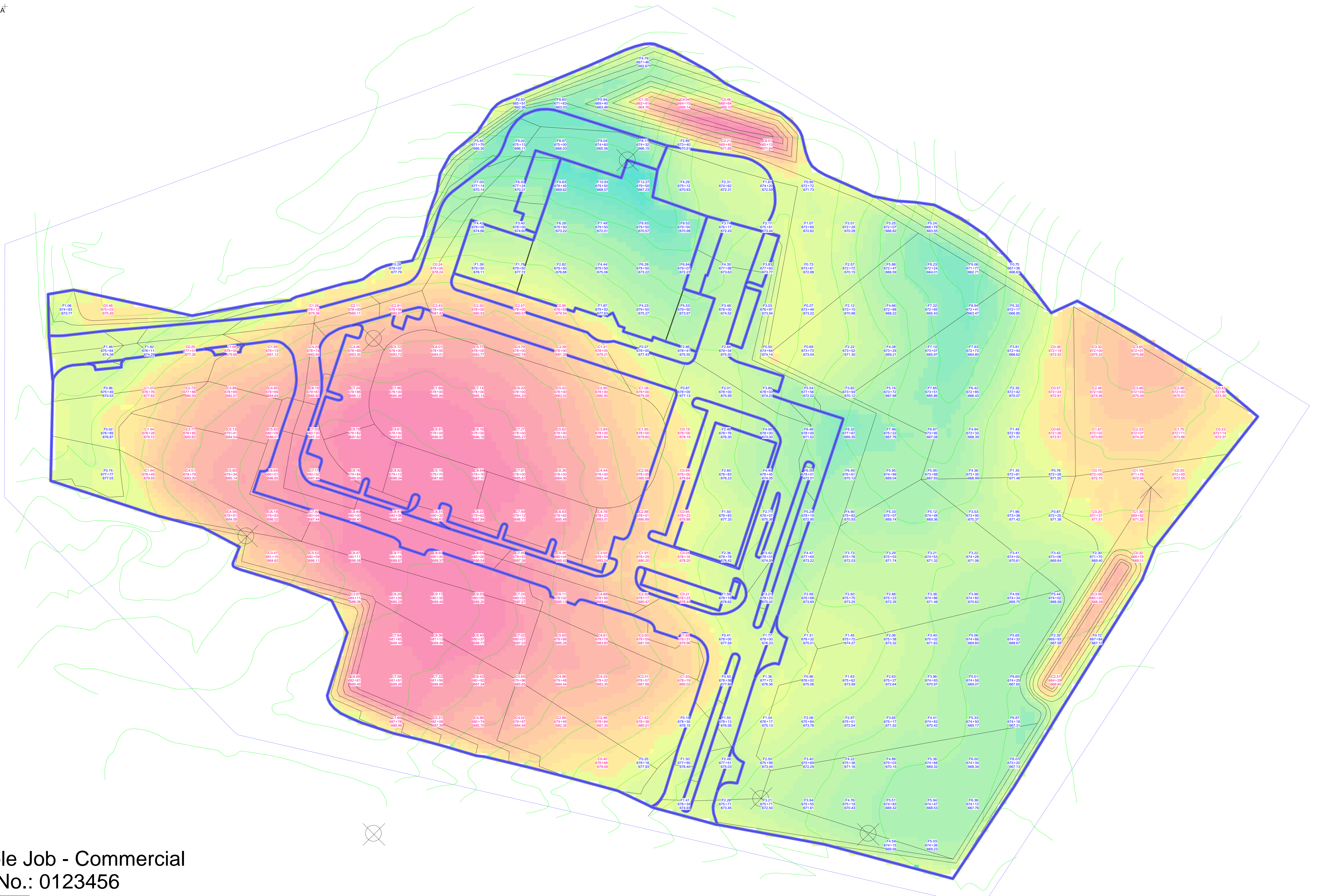
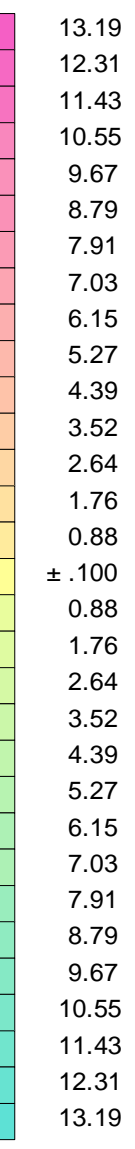
A(N=1005,E=-448)
B(N=-87,E=-448)
C(N=-87,E=1135)

Volume CL+	Area			Volume		Comp Ratio		Volume		Export	Change
	Total	Cut	Fill	Cut	Fill	Cut	Fill	Cut	Fill	-Import	Per .1 FT
SITE	840,144	395,108	445,036	47,940	57,592	1.00	1.15	47,940	66,231	-18,291	
	REFUSAL	187,213		20,432		1.00		20,432		20,432	
		SITE	Total:	68,372	57,592			68,372	66,231	2,141	3,578

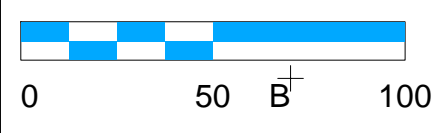
Regions Total	840,144	395,108	445,036	47,940	57,592			47,940	66,231	-18,291	
	REFUSAL	187,213		20,432				20,432		20,432	
		Regions	Total:	68,372	57,592			68,372	66,231	2,141	3,578

Strip Qtys	Depth	Length	Area	Volume
TOPSOIL	0.500	4,005	840,143	15,558

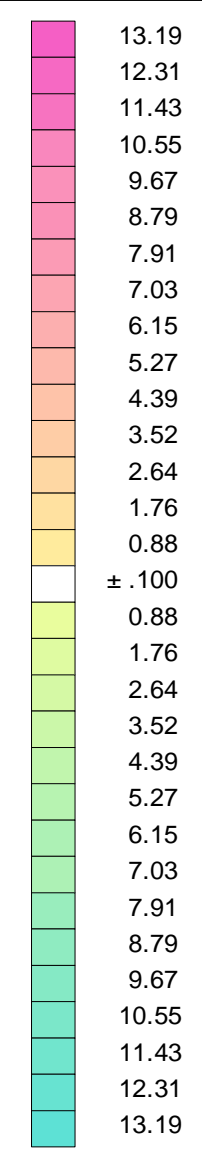
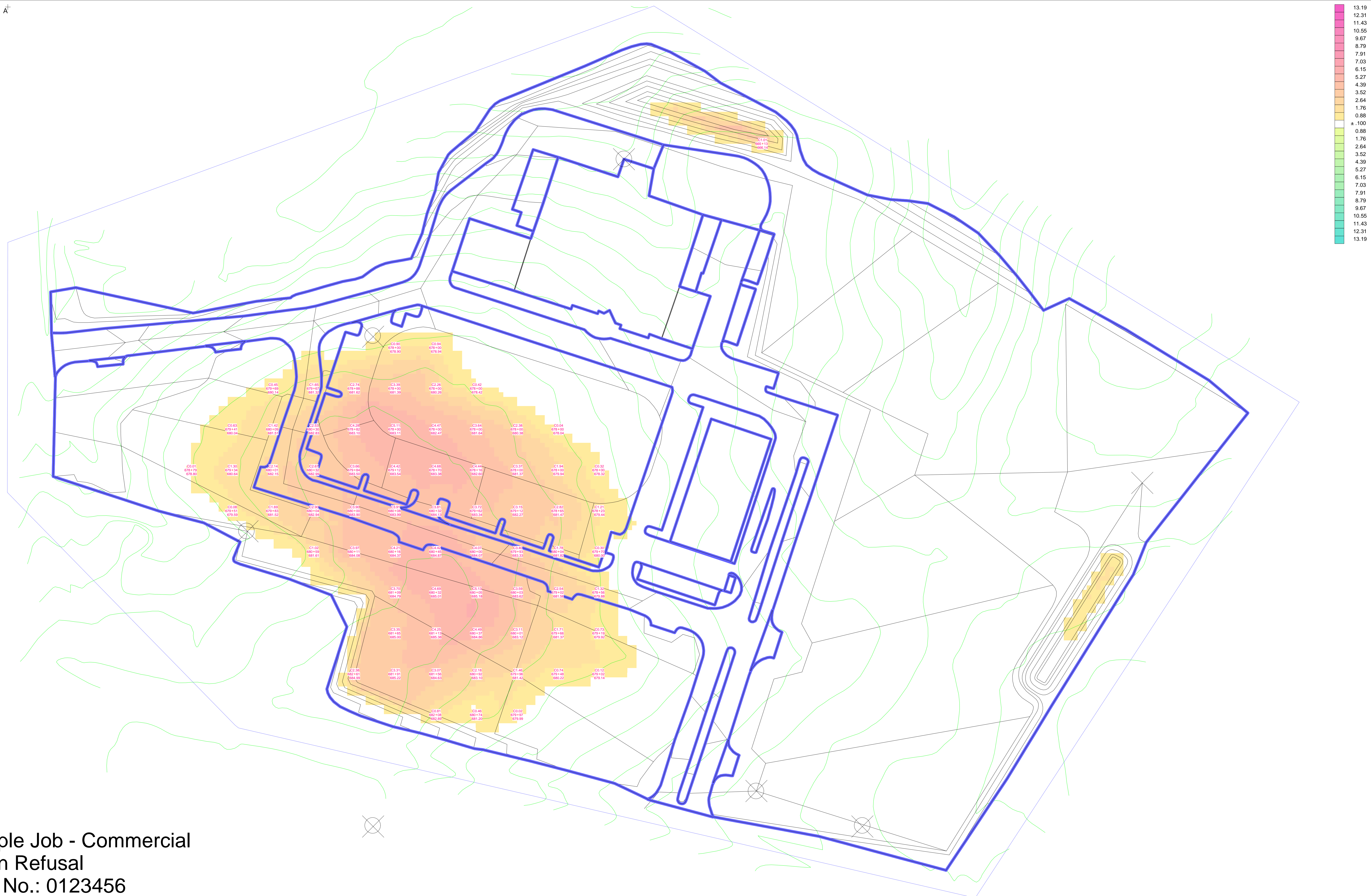
Sect Qtys	Depth	Length	Area	Volume
BUILDING	0.666	1,029	40,809	1,007
BUILDING	0.666	472	12,331	304
BUILDING	Sub:	1,501	53,140	1,311
CONCRETE PAVE	0.833	448	10,589	327
HEAVY PAVE	1.250	4,376	125,038	5,789
LIGHT PAVE	0.917	1,603	91,126	3,095
LIGHT PAVE	0.917	135	656	22
LIGHT PAVE	0.917	180	944	32
LIGHT PAVE	0.917	248	2,003	68
LIGHT PAVE	0.917	56	167	6
LIGHT PAVE	0.917	108	328	11
LIGHT PAVE	0.917	98	293	10
LIGHT PAVE	0.917	255	2,918	99
LIGHT PAVE	0.917	232	2,077	71
LIGHT PAVE	0.917	171	1,225	42
LIGHT PAVE	0.917	187	1,367	46
LIGHT	Sub:	3,273	103,104	3,502
RESPREAD	0.333	4,005	529,771	6,534
RESPREAD	0.333	390	1,471	18
RESPREAD	0.333	435	2,121	26
RESPREAD	0.333	170	493	6
RESPREAD	0.333	588	2,205	27
RESPREAD	0.333	825	4,108	51
RESPREAD	0.333	109	500	6
RESPREAD	0.333	614	5,440	67
RESPREAD	0.333	413	2,161	27
RESPREAD	Sub:	7,549	548,270	6,762
	Total	17,147	840,141	17,691



Sample Job - Commercial
 SDS No.: 0123456



A(N=1005,E=448)
 B(N=87,E=448)
 C(N=87,E=1135)



Sample Job - Commercial
 Cut in Refusal
 SDS No.: 0123456

0 50 100
 A(N=1005,E=-448)
 B(N=87,E=-448)
 C(N=87,E=1135)